

IV-4.2 (32Cd) ELECTRICAL

LOW INTENSITY TYPE B ICAO

Electrical obstruction light. High brightness LED with light beam concentration optics (10°).

Developed for the signaling of meteorological and telecommunication towers, cranes, chimneys, airfields, bridges, marinas and any structure up to 45m high.

BENEFITS

Wide range power supply: 110-230V AC.

No maintenance costs.

Easy to use: Connect it to the grid and put the switch in the "ON" position.

Wide range of options for different environments.

With option "S.A.I. Back Up ": Rechargeable backup battery integrated. It continues shining in the event of an electrical cut (See autonomy).

Recommended for places with risk of electric power cut or if you need to locate the beacon temporarily in places without electrical connection.

MEET THE FOLLOWING SPECIFICATIONS

ICAO (Annex 14, Volume I, (7th edition, 07/2016) / AESA CS-ADR-DSN (Book 1, 4th edition, 12/17), by STAC-DGAC No. 2018-075 / OBS.
 UNE EN 61000-4-3 (Electromagnetic Compatibility) / UNE 20-324-93 EN 60520 (Code IP-66) (Degree of Protection) / UNE-EN-60068-2-30: 00 (Humid Heat) / UNE- EN-60068-2-14: 00 (Humid Heat, Cold-Heat) / NSS ISO 9227: 1990 (Corrosion in Salt fog) / UNE-EN 60068-2-2: 97 (Dry heat 80°) / UNE-EN 50102 : 96 A1: 99 (Protection degree IK08 / une-en 60068-2-1: 96 (Climatic chamber at -33°) / UNE-EN 12352: 2000 (Luminous device class L2L) / Manufactured in the European Union CE.



MODELS:

IV-4.2 (32 Cd) ICAO Type B

IV-4.1 (10 Cd) ICAO Type A

TECHNICAL SPECIFICATIONS:

Energy:	Electrical (90-264V AC, 47-63Hz).		
Intensity:	> 32Cd (ICAO Type B Compliant).		
Twilight sensor:	Optional.		
Batteries:	Only in model "S.A.I. Back Up " incorporated (suitable air transport).		
Load management:	Electronic load control by CPU.		
Autonomy approx. (10 hours / day, S.A.I. Back Up model only):	Flashes 20 nights	Fixed 4 night	
Operational life:	5 years (except extreme climatology).		
Light source:	5 high intensity LED (100,000 hours).		
Visibility:	Vertical angle beam 10°. Horizontal angle beam 360° Azimuth.		
Temperature:	-20 to +50°C		
Construction:	PMMA polycarbonate and Luran technical plastic with high resistance to impacts, U.V. radiation, salinity, corrosion, high and low temperatures.		
Protection degree:	IK08, IP66.		
Weight:	2.4 Kg (3.2Kg with option "S.A.I. Back Up".		
Dimensions:	233mm base x 178m height		

OPTIONS:

Light colors:

Red, White, Blue, Green, Amber.

Mode:

Fixed, Flashes (40 DPM), Sparkles with specific pattern.

Function:

24h "Always on".

Only night (twilight sensor option).

Synchronization:

Possibility GPS synchronization.

Communications:

GPRS, RF.

Fault alarm:

Dry contact.

Anchorage:

Vertical mast or wall.

Horizontal tube

Horizontal surface.

Airfield deflector panel 45°.

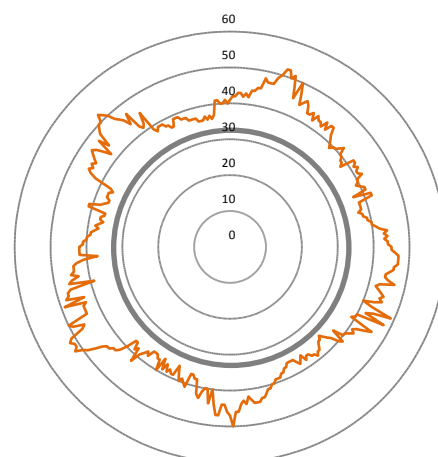
Cone support for surface.

ICAO Certification (Vol. 1, Annex 14, Table 6.3.)

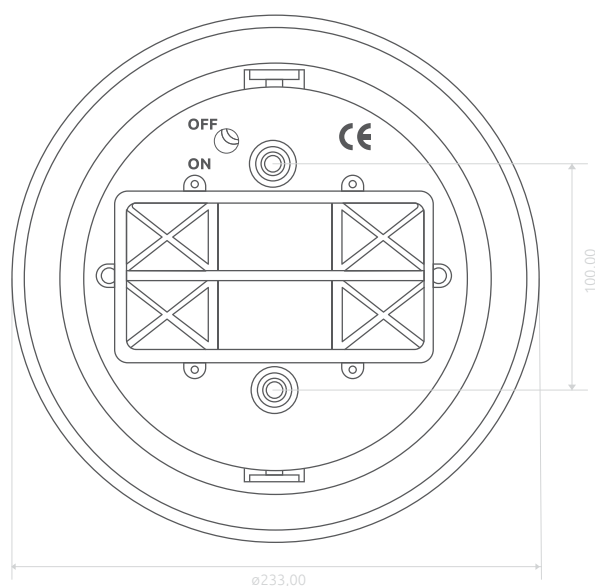
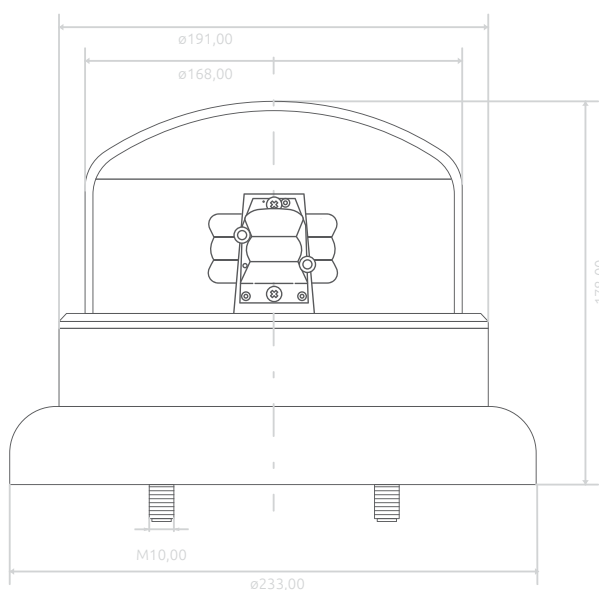
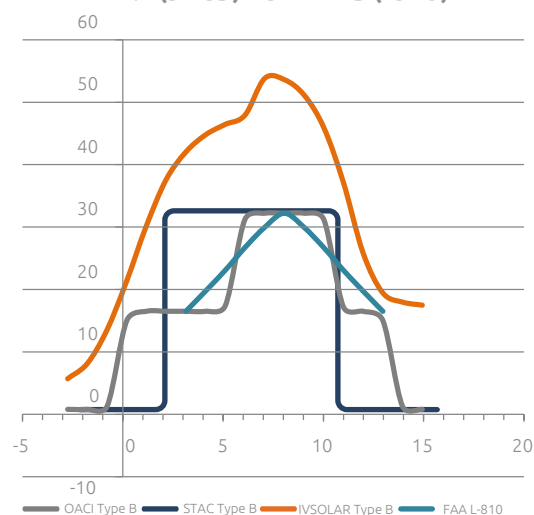
By STAC-DGAC (Fr.) AIDO-ENAC (Esp.)



IV-4.2 (32 CD) VS TYPE B (ICAO)



IV-4.2 (32 CD) VS TYPE B (ICAO)



Beacon, elevation and base plans.

WWW.IVSOLAR.COM

C/ SEGRE NO 20, 08110 MONTCADA I REIXAC BARCELONA (SPAIN)
 TEL: 902 998 941 · FAX: 933 205 666 E-MAIL: info@ivsolar.com